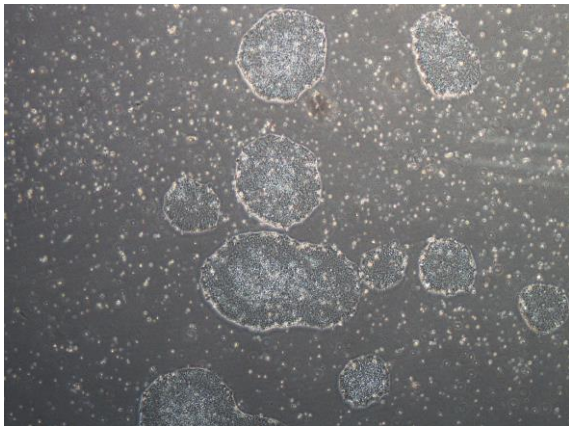
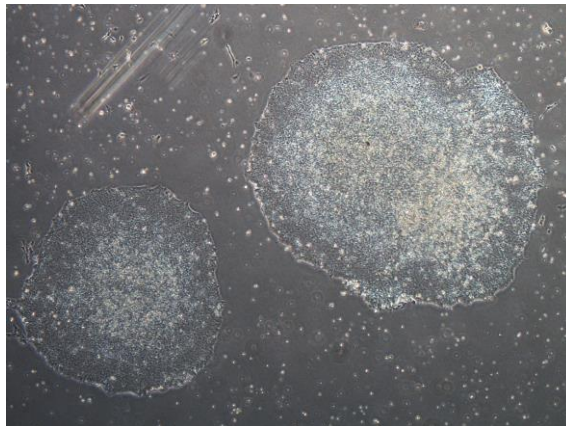


【 CiRA-j-1403 】 Morphology of iPSC colonies

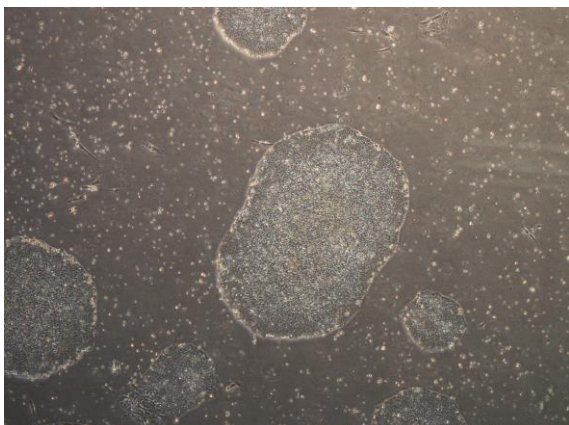
CiRA-j-1403-A: passage-3



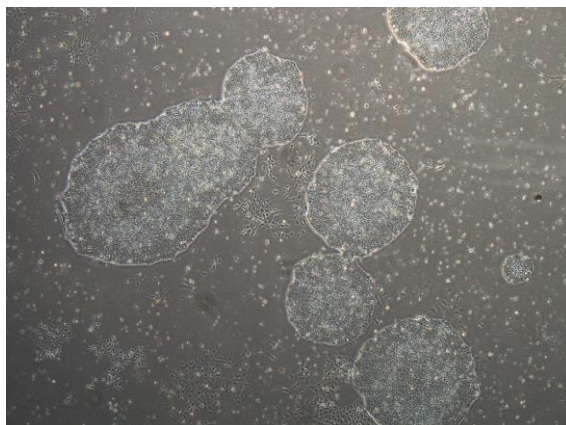
CiRA-j-1403-B: passage-3



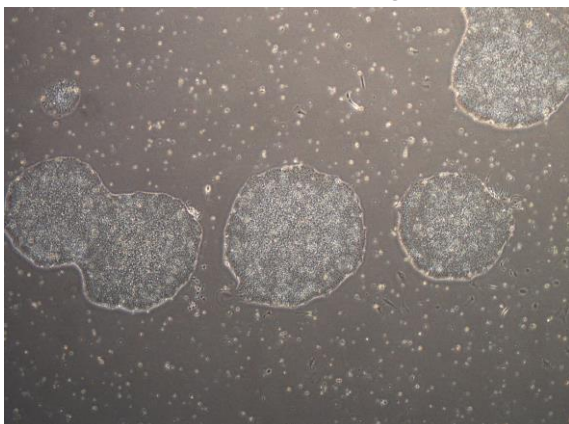
CiRA-j-1403-C: passage-3



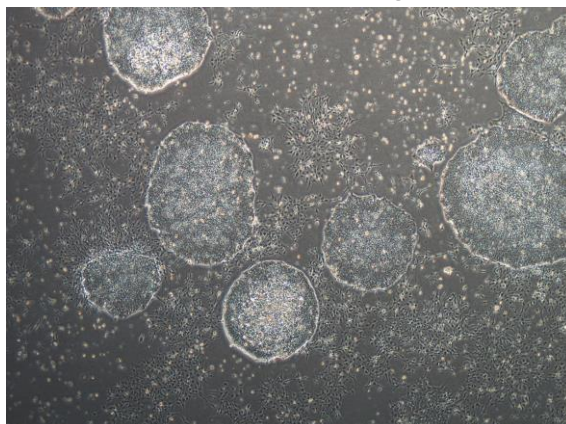
CiRA-j-1403-D: passage-3



CiRA-j-1403-E: passage-3



CiRA-j-1403-F: passage-3



(All images were captured at 4x magnification)